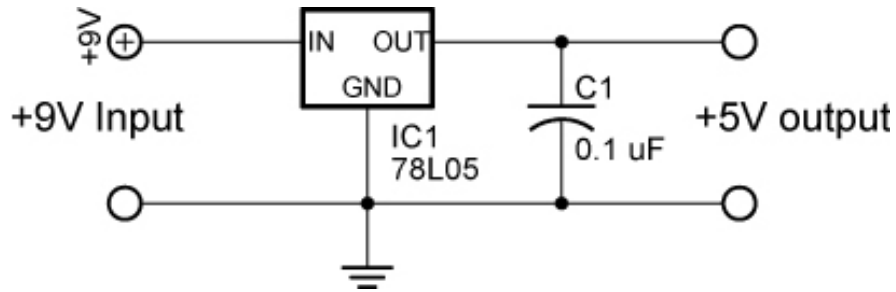


## +5 Volt Voltage Regulator Circuit



**Explanation:** A voltage regulator provides a constant dc output voltage that is nearly independent of the input voltage, output load current, and temperature. The supply voltage to a voltage regulator must be 2 - 3 volts above the regulator rating. For example, a 78L05 must have at least 7 to 8 volts as a supply to work properly. The 7800 series voltage regulators are integrated circuits (IC) that provide a positive voltage output. The 7900 series supplies a negative voltage output.

### 7800 Series Chart:

#### 7800 Series Voltage Regulators

Type Number	Output Voltage
-------------	----------------

7833	+3.3 V
7805	+5.0 V
7806	+6.0 V
7808	+8.0 V
7809	+9.0 V
7810	+10.0 V
7812	+12.0 V
7815	+15.0 V
7818	+18.0 V
7820	+20.0 V
7824	+24.0 V

### Related Web Sites:

<http://www.afreeland.com/node/16>

[http://www.sparkfun.com/commerce/tutorial\\_info.php?tutorials\\_id=83&page=1](http://www.sparkfun.com/commerce/tutorial_info.php?tutorials_id=83&page=1)

[http://www.sparkfun.com/commerce/tutorial\\_info.php?tutorials\\_id=57&page=1](http://www.sparkfun.com/commerce/tutorial_info.php?tutorials_id=57&page=1)

<http://www.scienceprog.com/7805-voltage-regulator-for-your-design/>