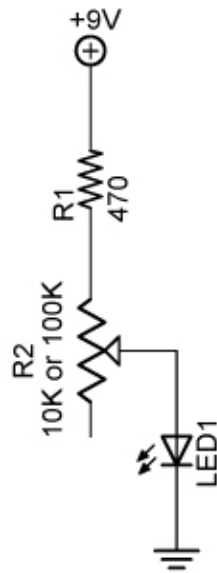


LED Dimmer



LED Dimmer

Explanation: Potentiometer controls the current to the LED. The 470 ohm resistor R1 protects the LED from burning out when the potentiometer resistance is very low. The 10K potentiometer dims the LED but does not entirely turn it off whereas the 100K potentiometer dims the LED to emit no light.

Related Lesson:

http://cornerstonerobotics.org/curriculum/lessons_year1/ER%20Week9,%20Potentiometers.pdf